

TECHNICAL SPECIFICATIONS

CATHETER SPECIFICATIONS		DELIVERY SYSTEM	
Tip entry profile	0.017" (0.43 mm)	Drug	Paclitaxel
Balloon wrapping	Tri-fold	Drug dose	3.0 µg/mm²
Recommended guide catheter	5F compatible	Molecular transfer matrix	Butyryl-Tri-Hexyl Citrate (BTHC)
Recommended inflation time	At least 30 seconds	Coating area	Cylindrical and tapered section of the balloon

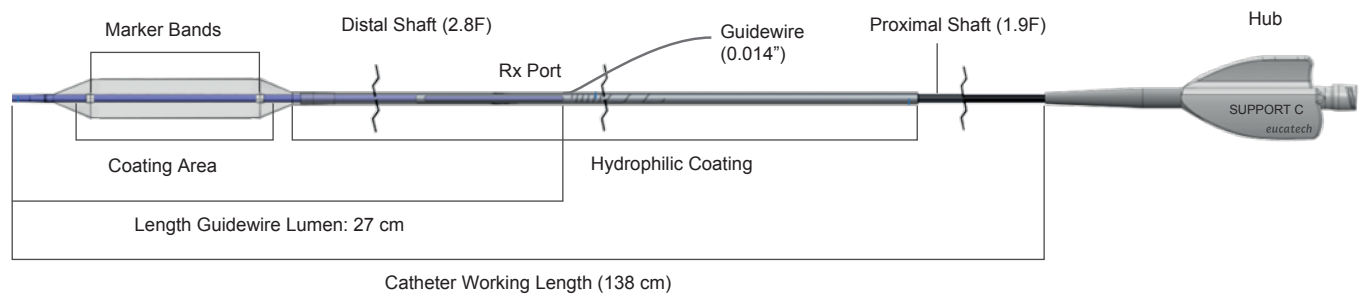
COMPLIANCE CHART

Pressure (atm)	Balloon Diameter (mm)							
	2.00	2.25	2.50	2.75	3.00	3.25	3.50	4.00
7 (NOM)*	2.00	2.25	2.50	2.75	3.00	3.25	3.50	4.00
8	2.05	2.30	2.53	2.79	3.03	3.29	3.55	4.06
9	2.09	2.35	2.57	2.83	3.07	3.33	3.59	4.12
10	2.14	2.40	2.60	2.87	3.10	3.37	3.64	4.18
11	2.18	2.45	2.63	2.91	3.14	3.41	3.68	4.24
12 (RBP)**	2.23	2.50	2.67	2.94	3.17	3.45	3.73	4.29
13 (RBP)**	2.27	2.54	2.70	2.98	3.20	3.49	3.77	-

\* Nominal Pressure. The nominal in vitro device specifications do not take into account any lesion resistance. \*\* Rated Burst Pressure. Do not exceed RBP

ORDERING INFORMATION

Balloon Ø (mm)	Balloon Length (mm)				
	10	15	20	25	30
2.00	SUC20010	SUC20015	SUC20020	SUC20025	SUC20030
2.25	SUC22510	SUC22515	SUC22520	SUC22525	SUC22530
2.50	SUC25010	SUC25015	SUC25020	SUC25025	SUC25030
2.75	SUC27510	SUC27515	SUC27520	SUC27525	SUC27530
3.00	SUC30010	SUC30015	SUC30020	SUC30025	SUC30030
3.25	SUC32510	SUC32515	SUC32520	SUC32525	SUC32530
3.50	SUC35010	SUC35015	SUC35020	SUC35025	SUC35030
4.00	SUC40010	SUC40015	SUC40020	SUC40025	SUC40030



For more information please visit our website at <https://orbusneich.com> or contact us:

Corporate Headquarters

Units 303 & 305, 3/F, Building 20E  
Hong Kong Science Park  
Shatin, N.T., Hong Kong, China  
Phone +852.2802.2288  
Fax +852.2507.3532

EMEA Regional Headquarters

Drs. W. van Royenstraat 5  
3871 AN Hoevelaken  
The Netherlands  
Phone +31.33.254.1150  
Toll Free Phone 00800.0254.1150\*

\* Only for Belgium, Denmark, France, Germany, Ireland, Netherlands, Norway, Sweden and UK

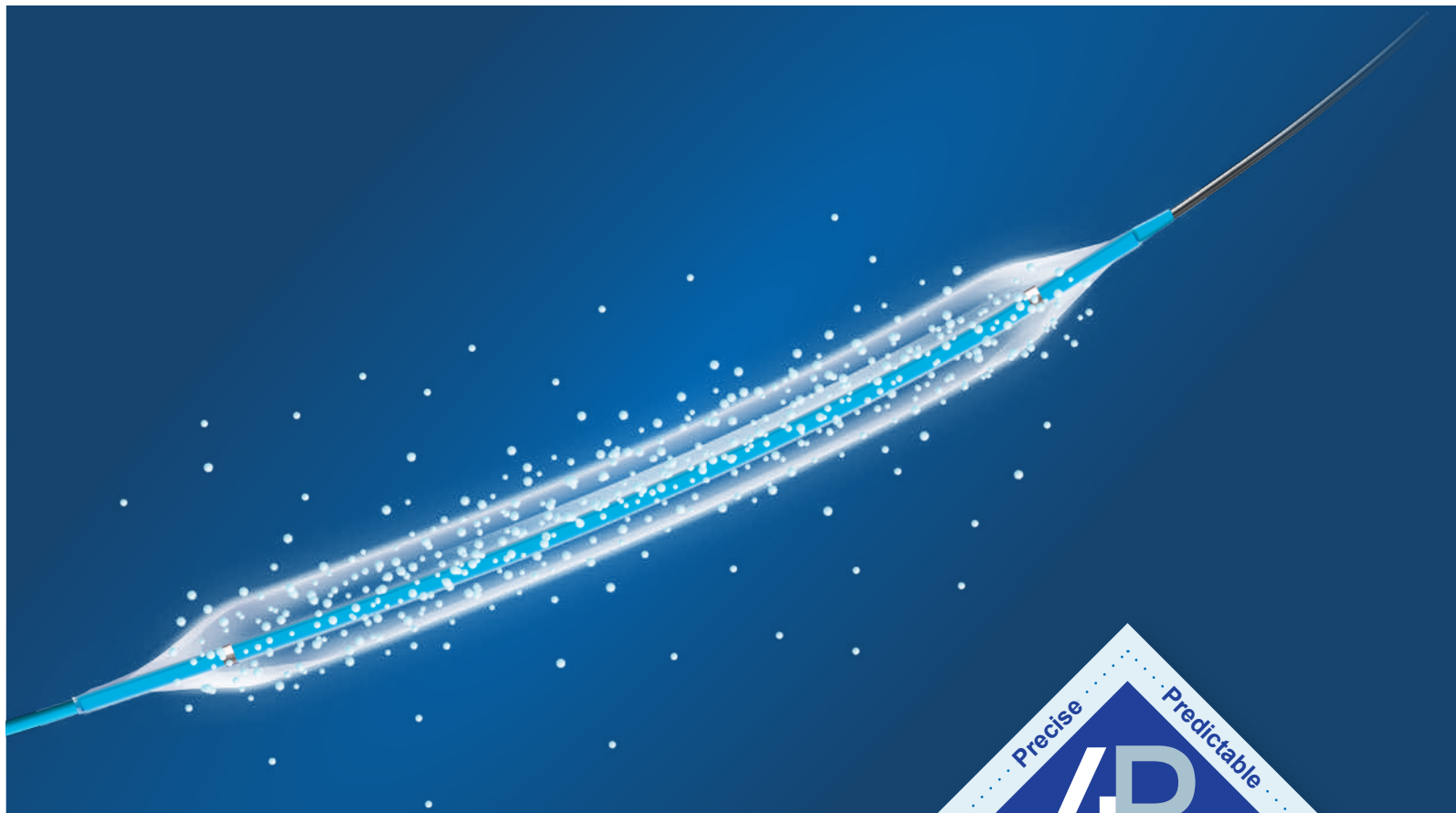
SUPPORT C™ is manufactured in Germany.

©2025 OrbusNeich Medical Group Holdings Limited or its affiliates. All rights reserved.  
Not available for sale in the USA.

G-70-2389 Rev04

SUPPORT C and OrbusNeich are trademarks of OrbusNeich Medical Group Holdings Limited or its affiliates.  
All data and photos on file. Illustrations are not to be considered as engineering drawings or photos.

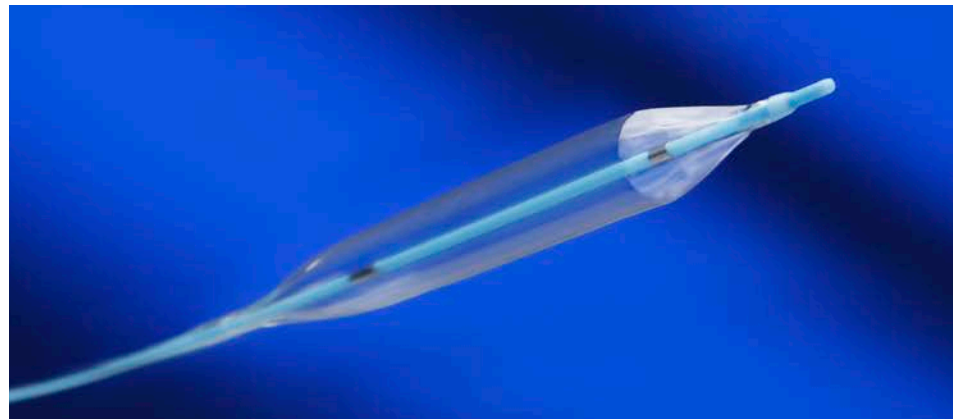
SUPPORT C™  
Paclitaxel Coated PTCA Catheter



Designed for Optimized  
Drug Transfer

## ◆ Precise Deliverability

Low profile and good deliverability for crossing the challenging vessel



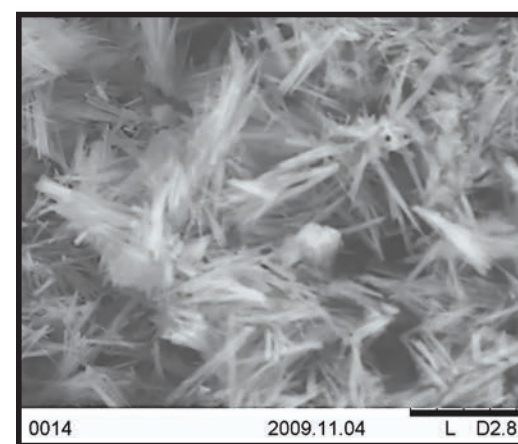
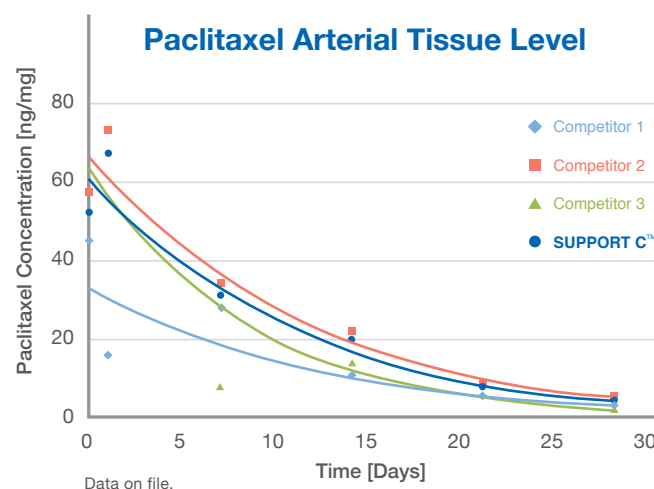
## ◆ Predictable Coating

Uniform drug coating with Butyryl-Tri-Hexyl Citrate (BTHC) excipient enables high bioavailability of Paclitaxel and uniform vessel wall coverage at target vessel



## ◆ Persistent Tissue Absorption

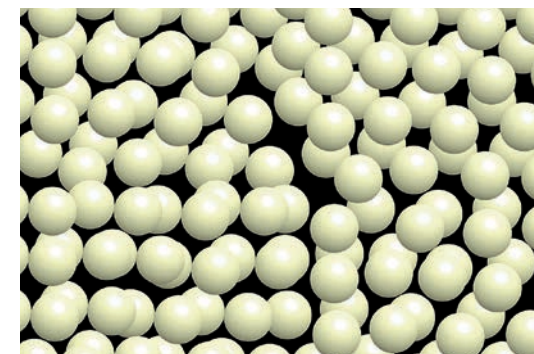
Microcrystalline Paclitaxel acts as a reservoir for sustained drug release over 30 days



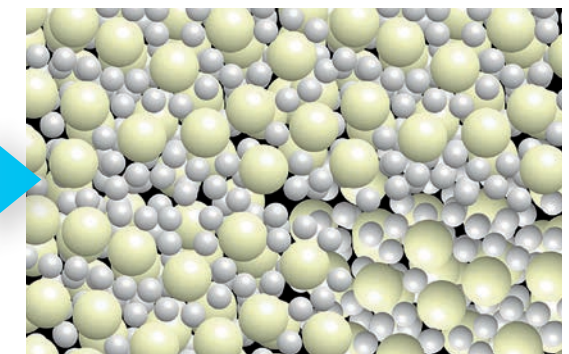
Data on file.

## ◆ Prompt and Safe Drug Transfer

BTHC as a high drug retention excipient protects against premature drug wash-off for optimal drug absorption into the vessel wall



Pure Paclitaxel



Drug Carrier Matrix  
Paclitaxel and BTHC

