

TECHNICAL SPECIFICATIONS

CATHETER SPECIFICATIONS		DELIVERY SYSTEM	
Tip entry profile	0.017" (0.43 mm)	Drug	Paclitaxel
Balloon wrapping	Ø 2.00 – 2.50: 3-fold / Ø 3.00 – 7.00: 5-fold	Drug dose	3.0 µg/mm ²
Maximum guidewire diameter	0.018" (0.46 mm)	Molecular transfer matrix	Butyryl-Tri-Hexyl Citrate (BTHC)
		Coating area	Cylindrical and tapered section of the balloon

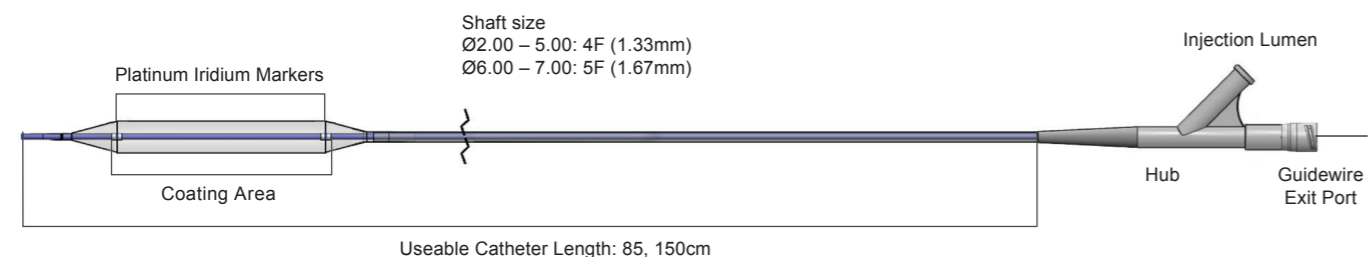
COMPLIANCE CHART

Pressure (atm)	Balloon Diameter (mm)						
	2.00	2.5	3.00	4.00	5.00	6.00	7.00
7 (NOM)*	2.00	2.50	3.00	4.00	5.00	6.00	7.00
8	2.04	2.53	3.03	4.06	5.11	6.08	7.05
9	2.09	2.57	3.05	4.12	5.22	6.15	7.10
10	2.13	2.60	3.08	4.18	5.32	6.23	7.15
11 (RBP)**	2.18	2.63	3.10	4.24	5.43	6.30	7.20
12 (RBP)**	2.22	2.67	3.13	4.30	5.54	6.38	-
13 (RBP)**	2.27	2.70	3.15	-	-	-	-

*Nominal Pressure. The nominal in vitro device specifications do not take into account any lesion resistance. ** Rated Burst Pressure. Do not exceed RBP

ORDERING INFORMATION

Balloon Ø (mm)	Introducer Sheath	Shaft Length: 85 cm					Shaft Length: 150 cm				
		Balloon Length (mm)					Balloon Length (mm)				
		40	60	80	120	150	40	60	80	120	150
2.00	5F	VIT0200040085	VIT0200060085	VIT0200080085	VIT0200120085	VIT0200150085	VIT0200040150	VIT0200060150	VIT0200080150	VIT0200120150	VIT0200150150
2.50		VIT0250040085	VIT0250060085	VIT0250080085	VIT0250120085	VIT0250150085	VIT0250040150	VIT0250060150	VIT0250080150	VIT0250120150	VIT0250150150
3.00		VIT0300040085	VIT0300060085	VIT0300080085	VIT0300120085	VIT0300150085	VIT0300040150	VIT0300060150	VIT0300080150	VIT0300120150	VIT0300150150
4.00		VIT0400040085	VIT0400060085	VIT0400080085	VIT0400120085	VIT0400150085	VIT0400040150	VIT0400060150	VIT0400080150	VIT0400120150	VIT0400150150
5.00		VIT0500040085	VIT0500060085	VIT0500080085	VIT0500120085	VIT0500150085	VIT0500040150	VIT0500060150	VIT0500080150	VIT0500120150	VIT0500150150
6.00	6F	VIT0600040085	VIT0600060085	VIT0600080085	VIT0600120085	VIT0600150085	VIT0600040150	VIT0600060150	VIT0600080150	VIT0600120150	VIT0600150150
7.00		VIT0700040085	VIT0700060085	VIT0700080085	VIT0700120085	VIT0700150085	VIT0700040150	VIT0700060150	VIT0700080150	VIT0700120150	VIT0700150150



For more information please visit our website at <https://orbusneich.com> or contact us:

Corporate Headquarters
Unit 303 & 305, 3/F, Building 20E
Hong Kong Science Park
Shatin, N.T., Hong Kong, China
Phone +852.2802.2288
Fax +852.2507.3532

EMEA Regional Headquarters
Drs. W. van Royenstraat 5
3871 AN Hoevelaken
The Netherlands
Phone +31.33.254.1150
Toll Free Phone 00800.0254.1150*

* Only for Belgium, Denmark, France, Germany, Ireland, Netherlands, Norway, Sweden and UK

VITUS™ is manufactured in Germany.

©2024 OrbusNeich Medical Group Holdings Limited or its affiliates. All rights reserved.
Not available for sale in the USA.

G-70-2391 Rev02

VITUS and OrbusNeich are trademarks of OrbusNeich Medical Group Holdings Limited or its affiliates.
All data and photos on file. Illustrations are not to be considered as engineering drawings or photos.



**Designed for Optimized
Drug Transfer**

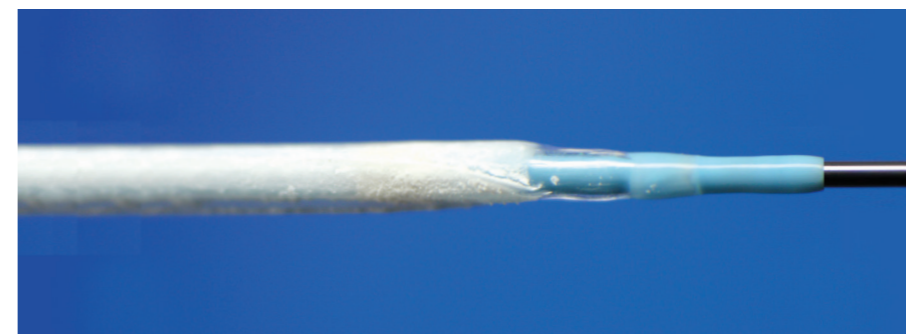
◆ Precise Deliverability

Low profile and good deliverability for crossing the challenging vessel



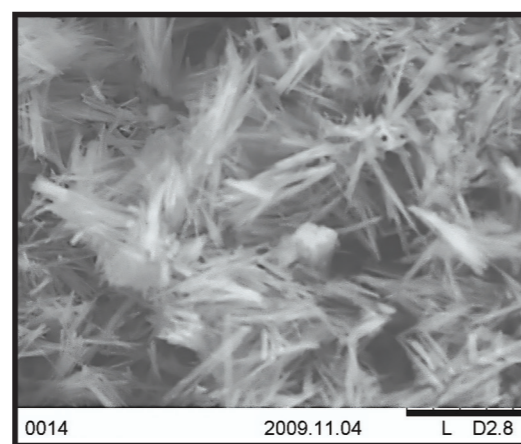
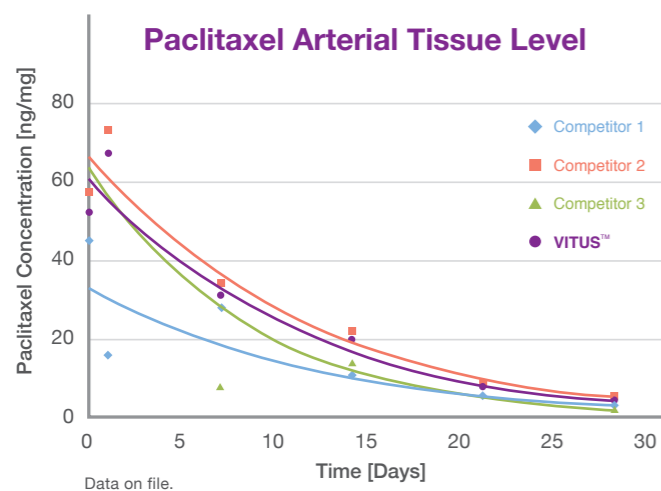
◆ Predictable Coating

Uniform drug coating with Butyryl-Tri-Hexyl Citrate (BTHC) excipient enables high bioavailability of Paclitaxel and uniform vessel wall coverage at target vessel



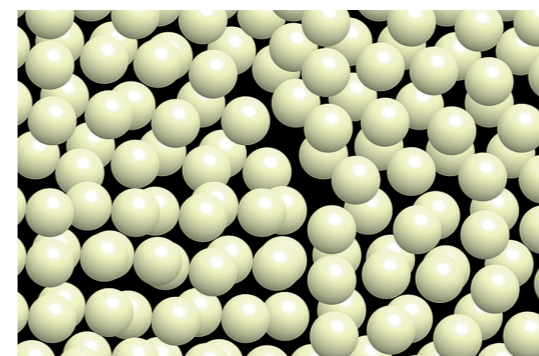
◆ Persistent Tissue Absorption

Microcrystalline Paclitaxel acts as a reservoir for sustained drug release over 30 days

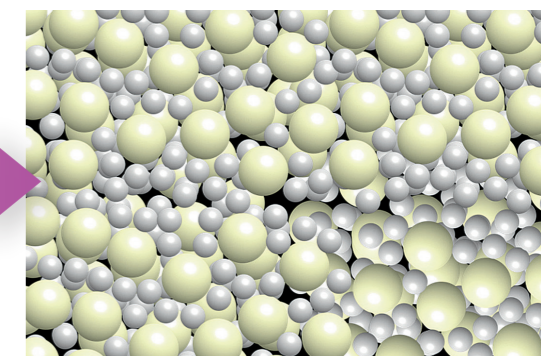


◆ Prompt and Safe Drug Transfer

BTHC as a high drug retention excipient protects against premature drug wash-off for optimal drug absorption into the vessel wall



Pure Paclitaxel



Drug Carrier Matrix
Paclitaxel and BTHC