

TECHNICAL SPECIFICATIONS

STENT SPECIFICATIONS			DELIVERY SYSTEM	
Drug/Polymer	Sirolimus/PLGA		Catheter type	Rapid exchange
Drug load	1.4 µg/mm ²		Guiding catheter compatibility	5F
Material	Cobalt chromium L605		Guidewire compatibility	0.014"
Strut thickness	Ø 2.25-4.0 mm	0.0026" (65 µm)	Proximal shaft	Stainless steel, PTFE coating
	Ø 4.50-5.0 mm	0.0042" (107 µm)	Coat distal shaft	Hydrophilic coating
Side branch access (Ø 2.25-4.0 mm)	5.3 mm		Proximal shaft size	1.9F
Radial strength	28psi		Distal shaft size	2.8F (Ø 2.25 – 4.00 mm) 3.0F (Ø 4.50 & 5.00 mm)
Foreshortening	< 2.5%		Nominal pressure	8 atm
Mechanical recoil	< 6%		RBP	19 atm (Ø 2.25 mm); 18 atm (Ø 2.5-2.75 mm); 17 atm (Ø 3.0-3.25 mm); 16 atm (Ø 3.5-4.0 mm); 15 atm (Ø 4.5-5.0 mm)
Overexpansion Limit	Ø 2.25-4.0 mm	4.5 mm		
	Ø 4.50-5.0 mm	6.0 mm		

COMPLIANCE CHART

Pressure (atm)	Balloon Diameter (mm)									
	2.25	2.50	2.75	3.00	3.25	3.50	4.00	4.50	5.00	
8 (NOM)*	2.25	2.50	2.75	3.00	3.25	3.50	4.00	4.50	5.00	
9	2.27	2.53	2.78	3.03	3.28	3.55	4.04	4.56	5.05	
10	2.29	2.56	2.81	3.06	3.32	3.59	4.09	4.60	5.09	
11	2.32	2.59	2.84	3.09	3.35	3.62	4.12	4.64	5.13	
12	2.34	2.62	2.86	3.12	3.38	3.65	4.15	4.68	5.16	
13	2.36	2.65	2.89	3.14	3.41	3.69	4.19	4.72	5.20	
14	2.38	2.68	2.91	3.17	3.44	3.72	4.23	4.76	5.23	
15 (RBP)**	2.40	2.71	2.94	3.20	3.47	3.76	4.27	4.81	5.27	
16 (RBP)**	2.42	2.74	2.97	3.22	3.50	3.80	4.31	-	-	
17 (RBP)**	2.45	2.78	3.00	3.25	3.53	-	-	-	-	
18 (RBP)**	2.47	2.82	3.03	-	-	-	-	-	-	
19 (RBP)**	2.49	-	-	-	-	-	-	-	-	

*Nominal Pressure. The nominal in vitro device specifications do not take into account any lesion resistance. ** Rated Burst Pressure. Do not exceed RBP

ORDERING INFORMATION

Stent Ø (mm)	Stent Length (mm)										
	8	10	13	16	18	23	28	33	38	43	48
2.25	ELM22508	ELM22510	ELM22513	ELM22516	ELM22518	ELM22523	ELM22528	ELM22533	ELM22538	ELM22543	ELM22548
2.50	ELM25008	ELM25010	ELM25013	ELM25016	ELM25018	ELM25023	ELM25028	ELM25033	ELM25038	ELM25043	ELM25048
2.75	ELM27508	ELM27510	ELM27513	ELM27516	ELM27518	ELM27523	ELM27528	ELM27533	ELM27538	ELM27543	ELM27548
3.00	ELM30008	ELM30010	ELM30013	ELM30016	ELM30018	ELM30023	ELM30028	ELM30033	ELM30038	ELM30043	ELM30048
3.25	ELM32508	ELM32510	ELM32513	ELM32516	ELM32518	ELM32523	ELM32528	ELM32533	ELM32538	ELM32543	ELM32548
3.50	ELM35008	ELM35010	ELM35013	ELM35016	ELM35018	ELM35023	ELM35028	ELM35033	ELM35038	ELM35043	ELM35048
4.00	ELM40008	ELM40010	ELM40013	ELM40016	ELM40018	ELM40023	ELM40028	ELM40033	ELM40038	ELM40043	ELM40048
4.50	-	-	ELM45013	ELM45016	ELM45018	ELM45023	ELM45028	ELM45033	ELM45038	-	-
5.00	-	-	ELM50013	ELM50016	ELM50018	ELM50023	ELM50028	ELM50033	ELM50038	-	-

For more information please visit our website at <https://orbusneich.com> or contact us:

Corporate Headquarters
Units 303 & 305, 3/F, Building 20E
Hong Kong Science Park
Shatin, N.T., Hong Kong, China
Phone +852.2802.2288
Fax +852.2507.3532

EMEA Regional Headquarters
Drs. W. van Royenstraat 5
3871 AN Hoevelaken
The Netherlands
Phone +31.33.254.1150
Toll Free Phone 00800.0254.1150*

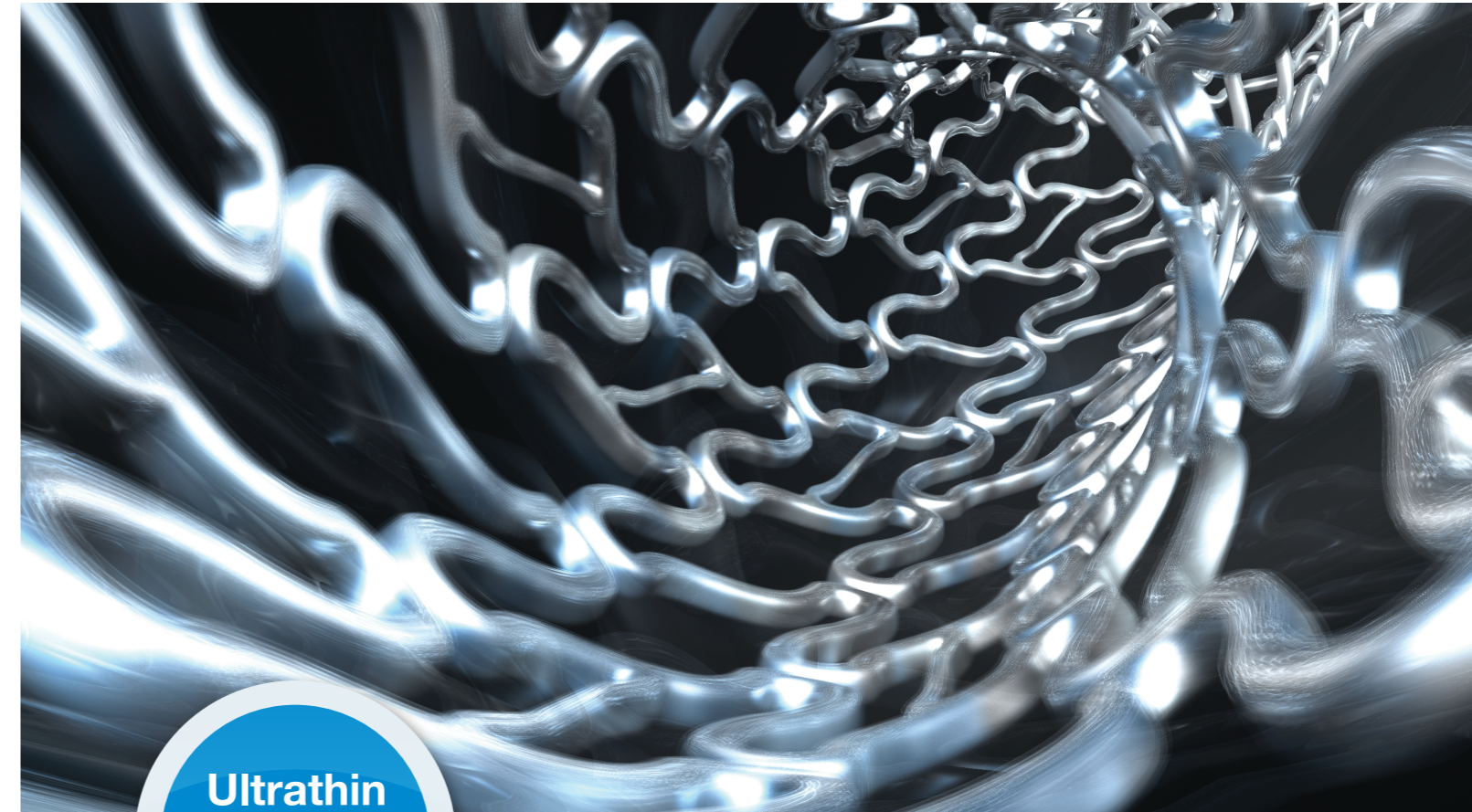
* Only for Belgium, Denmark, France, Germany, Ireland, Netherlands, Norway, Sweden and UK

eucaLimus™ is manufactured in Germany.

©2025 OrbusNeich Medical Group Holdings Limited or its affiliates. All rights reserved.
Not available for sale in the USA.

G-70-2387 Rev05

eucaLimus and OrbusNeich are trademarks of OrbusNeich Medical Group Holdings Limited or its affiliates.
All data and photos on file. Illustrations are not to be considered as engineering drawings or photos.



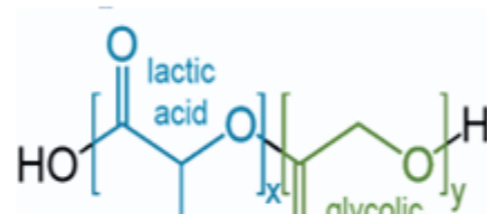
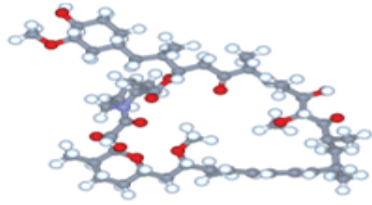
**Excellent Deliverability,
Optimal Therapy and Support**



Drug/Polymer

Sirolimus

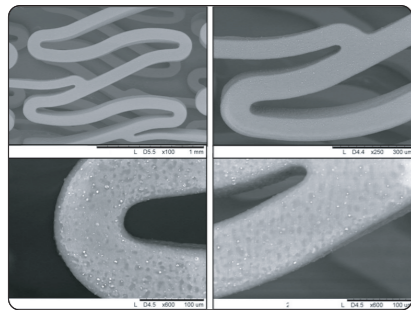
PLGA 85/15 polylactide-co-glycolide



- Sirolimus drug for inhibition of smooth muscle proliferation and intimal hyperplasia
- Drug load is 1.4 µg/mm²
- Drug is eluted via PLGA polymer that degrades within 10-13 weeks period

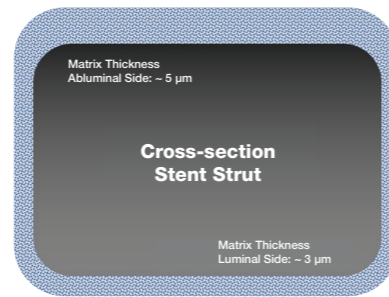
Coating Technology

Coating Integrity



Coating remains intact at maximum post dilatation expansion of 4.5 mm

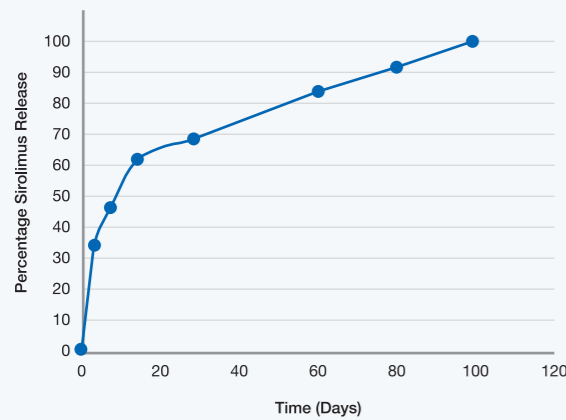
Asymmetrical Coating



Asymmetrical coating facilitates enhanced efficiency in drug delivery

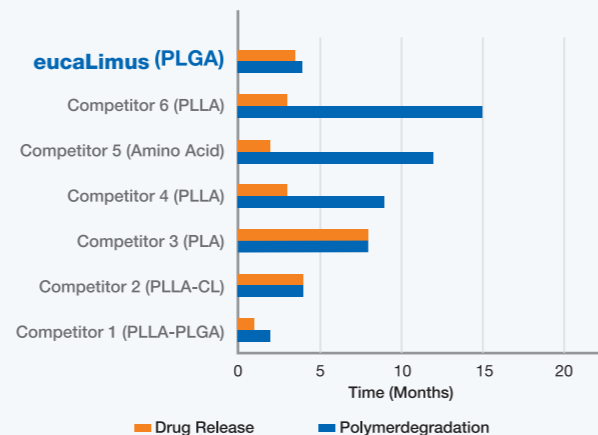
Drug Release / Polymer Degradation

Sirolimus Elution Time for Eucalimus



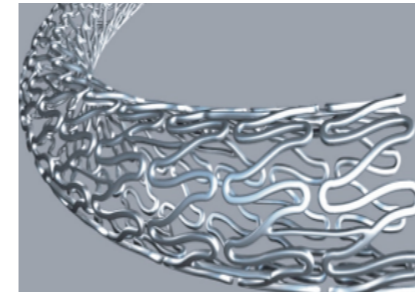
Data on file.

Drug Release and Polymer Degradation

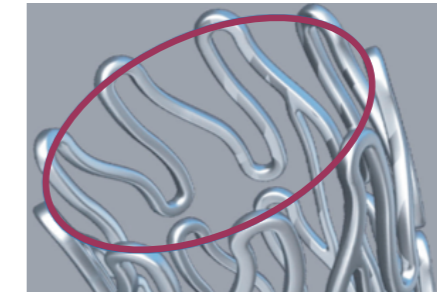


Data on file.

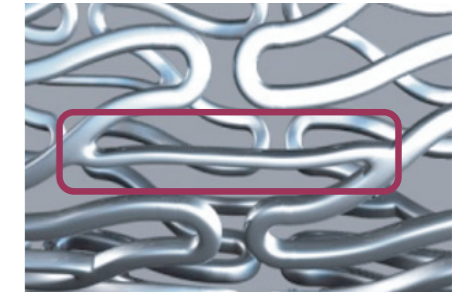
Ultrathin Strut of 65 µm



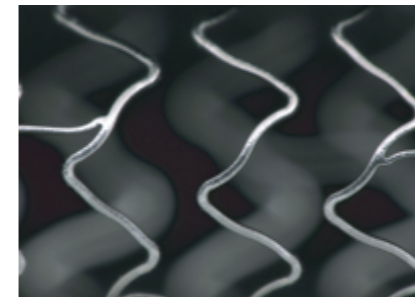
- 65 µm Strut Thickness**
- Excellent deliverability
 - Low crossing profile
 - Easier crossability



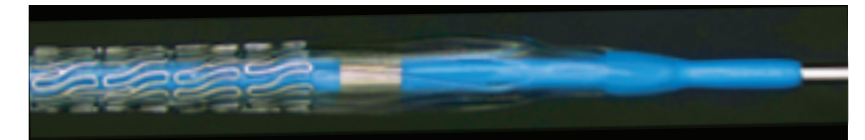
- 9 Crown Structure**
- Good vessel coverage
 - Good radial force
 - Low recoil & foreshortening



- Interlinks**
- Thin flexible interlinks for enhanced vessel conformability

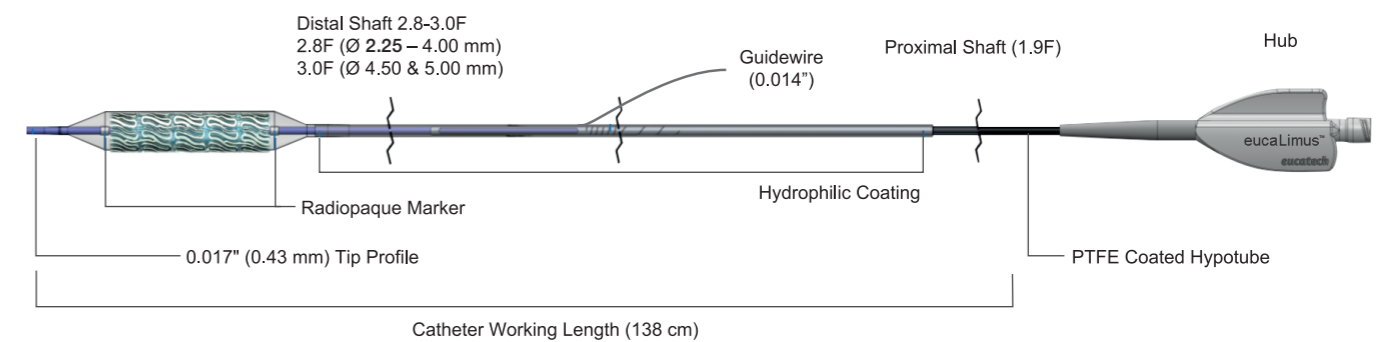


- Side Branch Access**
- Large cell opening facilitates easy device access to side branches



- Crossing Profile**
- Low crossing profile for reachability in complex anatomies

- Wide Range of Sizes**
- Diameter from 2.25 mm up to 5.0 mm
 - Stent length from 8 mm up to 48 mm



Stent Delivery System

- Enhanced balloon delivery system for pushability and trackability
- High performance hydrophilic coating to minimize friction
- Laser cut hypotube 1:1 transmission zone from hypotube to distal part
- Dual tapered atraumatic tip

36 MONTHS SHELF LIFE

e-beam Sterilization

- Dry sterilization
- Shelf life of 3 years