



COMBO Dual Therapy Stents in a severely calcified RCA

Doctor Simon Eccleshall is an Interventional Cardiologist of the Catheterisation Laboratory at the Department of Cardiology at the Norfolk and Norwich University Hospital, Norwich, United Kingdom.

Dr. Simon Eccleshall

Interventional Cardiologist,
MB, ChB (Birm), MRCP

The patient is an 84 year old female with anaemia and renal issues. The LAD was blocked and the left side was being filled from collaterals from the RCA. However, the diagnostic pre-procedural angiogram had shown extensive but diffuse calcium throughout the length of the RCA. The decision was made to gradually pre-dilate the RCA before stenting.

Upon IVUS, the RCA was shown to have eccentric calcium with the exception of the ostium that showed a tiny napkin ring of calcium (see *Figure I*). A 3.0 x 15 mm **Scoreflex™ Dual Wire Balloon** was used first to prepare the ostium of the RCA and a 4.0 x 15 mm **Scoreflex** was then used at the ostium and for the two calcified lesions in the mid vessel.

After that three **COMBO Dual Therapy Stents** (4.0 x 33 mm, 4.0 x 23 mm and a 4.0 x 9.0 mm) were successfully implanted in the RCA and post dilated with two 4.5 mm **Sapphire™ NC Coronary Dilatation Catheters** (12 and 18 mm). The outcome, viewed with IVUS, showed an excellent result (see *Figure II*).

The final cross filling image shows how well the collaterals are filling the left side (see *Figure III*).

"The COMBO Stent appeared to be a great stent for this very difficult case with a high risk of bleeding," said Dr. Eccleshall.



Fig. I: Pre-procedure



Fig. II: Post procedure

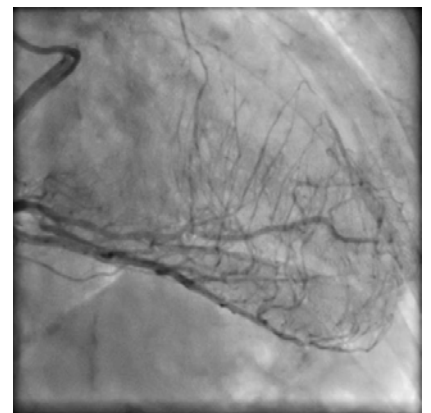


Fig. III: Cross filling